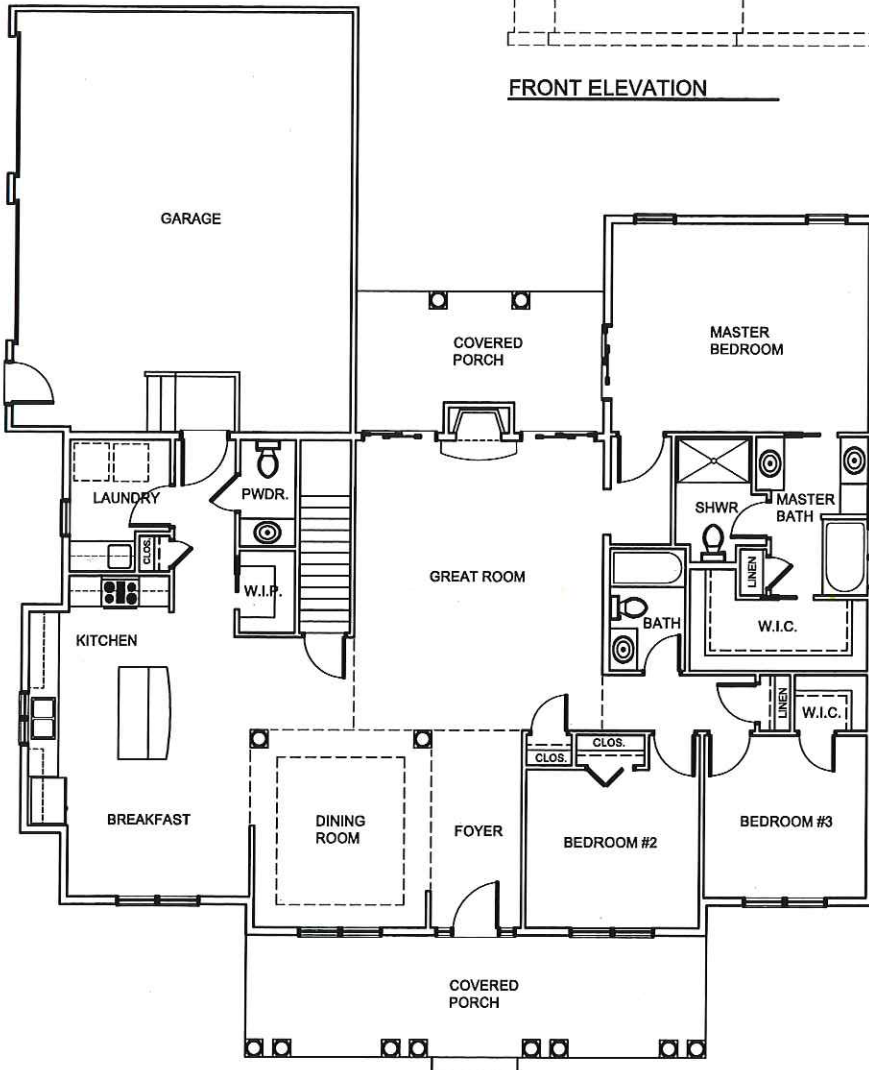


# Ranch Floor Plan



FRONT ELEVATION



FIRST FLOOR PLAN

AREA  
2032 SQ. FT.

**Our Ranch homes can be built on any lot and feature:**

- Three (3) bedrooms
- Two (2) full bathrooms
- 2,041 square feet of living space

Since 1959  
**MAYO**  
& ASSOCIATES, INC.  
**REALTORS**  
[www.mayorealtor.com](http://www.mayorealtor.com)

**For more information call:**

**Mayo & Associates, Realtors, Inc.**  
**Phone:** 330.726.7653  
[mayorealtor.com](http://mayorealtor.com)

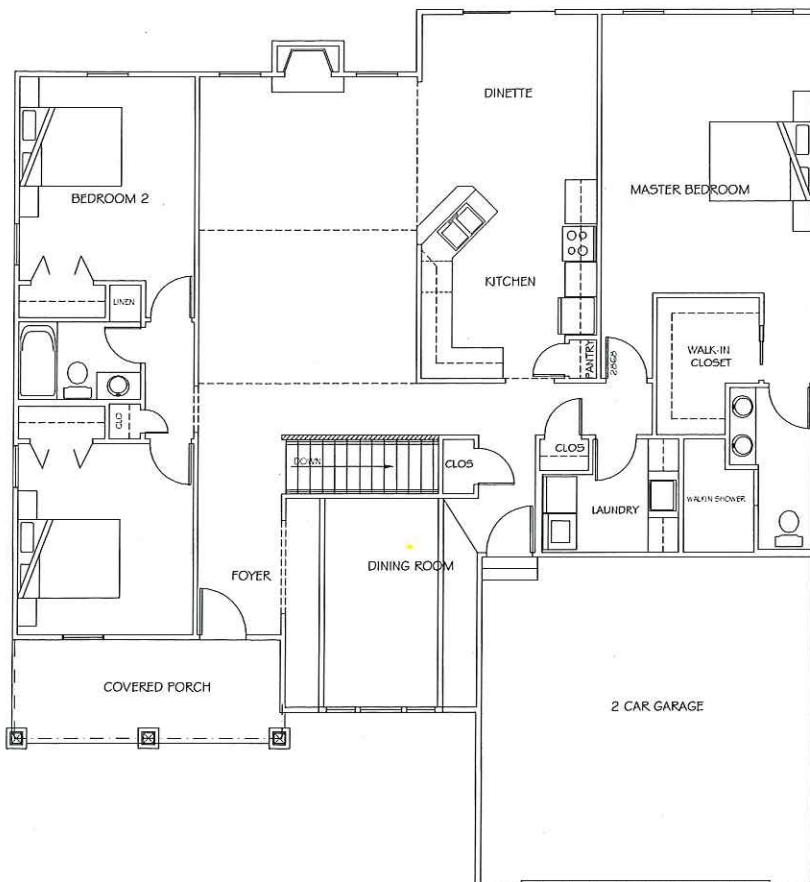


# Craftsman Floor Plan



FRONT ELEVATION

1/4" = 1'-0"



FLOOR PLAN

1,956 SQUARE FEET

**Our Craftsman homes can be built on any lot and feature:**

- Three (3) bedrooms
- Two (2) full bathrooms
- 1,956 square feet of living space



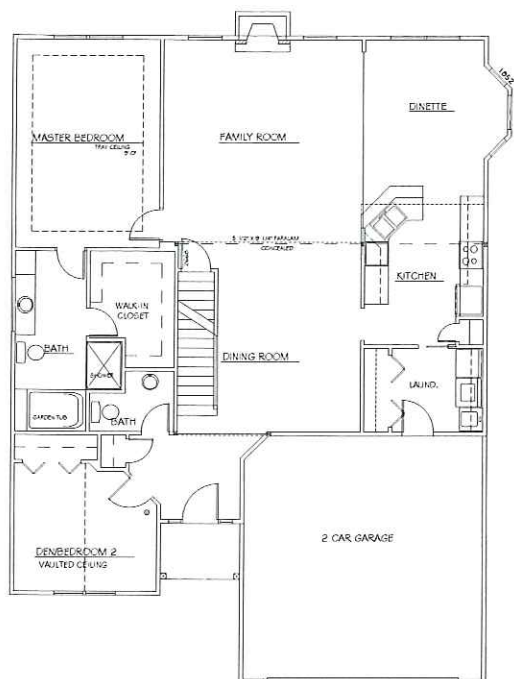
**For more information call:**

**Mayo & Associates, Realtors, Inc.**  
**Phone:** 330.726.7653  
 mayorealtor.com

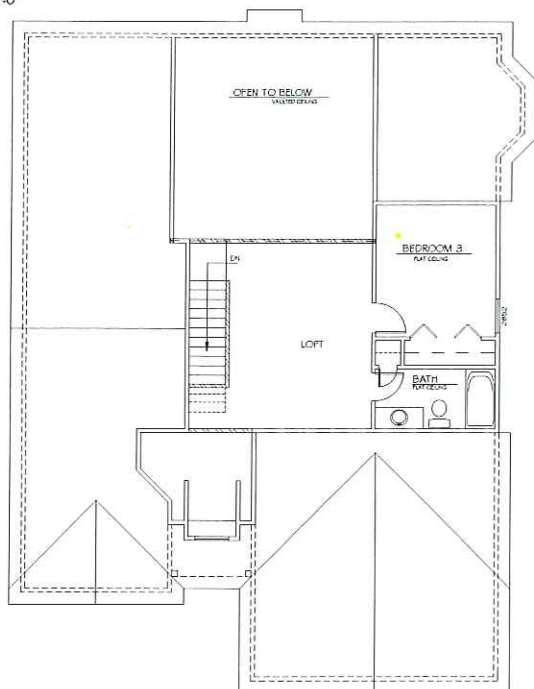
Visit [www.MayoRealtor.com](http://www.MayoRealtor.com)



# Villa Floor Plan



FIRST FLOOR  
1/4" = 1'-0"



SECOND FLOOR  
1/4" = 1'-0"



FRONT ELEVATION  
1/4" = 1'-0"

**Our Villas can be built on  
any lot and feature:**

- Three (3) bedrooms
- Two and a half (2.5) bathrooms
- One and a half (1.5) stories
- 1,979 square feet of living space



**For more information call:**

**Mayo & Associates, Realtors, Inc.**  
**Phone: 330.726.7653**  
mayorealtor.com

Visit [www.MayoRealtor.com](http://www.MayoRealtor.com)



# Standard Home Features

## by GreenHeart Homes

### Exterior

- Warm, richly appointed traditional elevations with GreenHeart's most innovative designs
- Low maintenance brick (per plan)
- High quality, low maintenance D-4 vinyl siding
- Low maintenance ventilated vinyl soffit
- Elegant coach lighting
- Insulated front door, custom surround and peep hole
- Handsome exterior hardware with privacy deadbolts on all exterior doors
- Pella® Vinyl windows with tilt to clean feature
- Full nylon screens included in all windows
- Decorative window grids in front windows
- Glass block basement windows with vents
- Raised panel garage door with opener
- Garage interiors finished with floor drain
- Front and rear water faucets
- Two exterior weatherproof electrical outlets
- Concrete walk from driveway to front door
- Designer shingles with 30 year limited warranty
- Felt paper installed under roof shingles
- Continuous aluminum gutters and down spouts
- Attic ventilation system with continuous ridge roof vent
- 16' wide concrete drive
- Concrete patio

### Neighborhood

- Underground public utilities
- Remote exterior meters for all public utilities
- Mailbox with address installed at curb
- No identical homes (elevations) permitted side by side for improved neighborhood appearance
- Concrete public sidewalks and street trees

### Thoughtful Interiors

- Decorator painting with accent trim
- Custom finished textured ceilings
- Raised panel interior doors
- Schlage® antique brass finished door hardware
- Privacy locks on bedroom and bathroom doors
- Fiberglass laundry sink
- Designer interior light fixture package including ceiling fixtures in all bedrooms
- Generous selections of long-life plush carpet in decorator colors
- 6lb foam carpet padding
- Stylish chrome plumbing fixtures by Moen®

### Kitchen and Bathrooms

- Designer maple recessed panel cabinets in a choice of stain colors with crown molding
- Ceramic tile flooring in entry halls, foyer, kitchen, breakfast area, baths and laundry room (per plan)
- Full complement of G.E. kitchen appliances
- Laminate kitchen counter tops
- 4" side and end splashes on all tops
- Ice maker connection for refrigerator
- High capacity 1/3 h.p. food disposal unit
- Stainless steel double-bowl sink in kitchen
- Kitchen sink sprayer
- Laminate vanity tops in all bathrooms
- Fiberglass shower pad with tile walls with glass door in master bath
- Fiberglass bathtubs in all bathrooms
- Full size plate glass mirrors in all full bathrooms
- Chrome towel bars and paper dispensers in all baths
- Shut off valves located at sinks and commodes
- Exhaust fans vented to exterior in all baths

### Functional

- Natural gas or electric dryer connection
- Natural gas or electric connections at range location
- Vinyl coated ventilated shelving in closets, laundry room and pantries (per plan)
- Three telephone outlets and three cable outlets installed in location of choice
- Protective ground fault interrupter circuits in wet areas
- Front door chime
- Merit direct vent fireplace
- All bedrooms pre-wired for ceiling fans

### Peace of Mind

- Pre-construction Buyer Builder Conference with your Personal Construction Supervisor
- Regular on-site quality control inspections by experienced GreenHeart's project manager
- All city, county or municipal code inspections
- New Home Orientation with your Personal Construction Supervisor to explain the operation of your new home and identify any details that need attention
- One year optional drywall inspection after closing, upon request
- Manufacturer warranty on all mechanical systems
- 12 month Builder warranty program