

Introducing GreenHeart RESTORATION & MILLWORK

We offer full-service restoration and custom millwork services and products to owners, property managers, architects, and contractors involved in residential, commercial and mixed-use Historic Building Preservation.



OUR CAPABILITY

We have combined and balanced traditional craftsmanship and leading-edge technology to provide world-class restoration and replication solutions. From using traditional hand tools and techniques to 3D imaging and CNC Replication we offer restoration and replication solutions.

OUR COMMITMENT TO INDUSTRY STANDARDS

We work with project stakeholders using published national, regional and local standards and guidelines for historic properties—preservation, adaptive-use rehabilitation, restoration, and reconstruction using generally accepted technical with Guidelines for each and in combination for each project.

OUR COMMITMENT TO HISTORIC ORGANIZATIONS

We are members of several prominent historical organizations and pre-qualified by the Cleveland

Restoration Society and Pittsburgh Landmark. We participate with complimentary Lunch & Lean style presentations and offer complimentary brief format property surveys. We also offer professional fee based formal long form property surveys in support of tax credits, architectural services, property management and a wide range of purposes.

OUR CAPACITY

We own and operate a 30,000 square foot custom restoration, millwork and glass fabrication shop in Youngstown (Boardman) Ohio.

GreenHeart
RESTORATION & MILLWORK

6001 Southern Blvd • Suite 105 • Boardman, OH 44512
330.259.3070 • GreenHeartCompanies.com

RESTORATION & MILLWORK



OUR COVERAGE

Sales offices in Cleveland's Ohio City, Youngstown (Boardman) Ohio and newly opening Morgantown West Virginia. Licensed Realtor® in Ohio and Pennsylvania Brokered through Berkshire Hathaway.

PRE-QUALIFICATION — Available upon request

AFFILIATES AND BRANDS

Restoration and Millwork • Custom Fabricated Glass for traditional or upgraded IG Glazing • 3D imaging for replication • Custom replication and restoration of stained, colored and beveled glass • WeatherPro® • and our Skilled Traditional Crafts are GreenHeart Team



Call John Angelilli: 330-502-6040

6001 Southern Blvd • Suite 105 • Boardman, OH 44512
330.259.3070 • GreenHeartCompanies.com



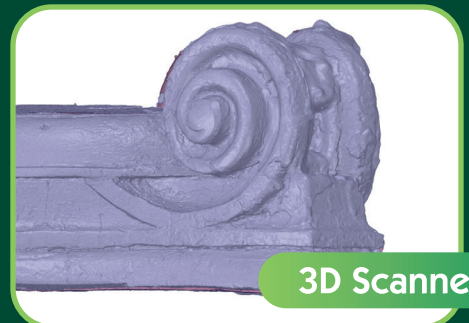
VOLUTE REPRODUCTION

Utilizing a Complete Digital Workflow

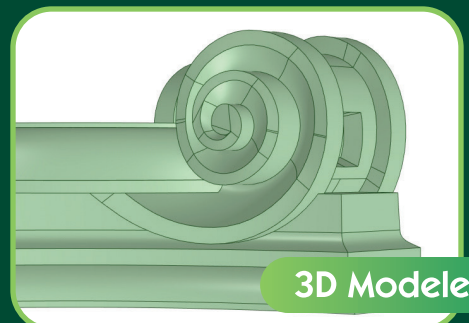
- 3D scanning captures fine detail of the original
- Captured data is digitally repaired using CAD software
- Complete digital model is optimized for 3D printing
- reproduction is made using 3D printing technology
- printed part is post-processed and finished
- ready to be installed for indoor or outdoor applications



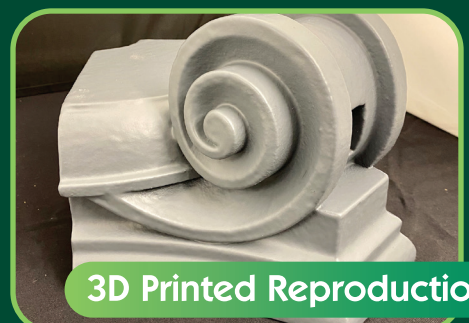
Original Volute



3D Scanned



3D Modeled



3D Printed Reproduction